



14TH ANNUAL METHODIST HOSPITAL FOUNDATION FASHION FUNDRAISER

For the Health of South Philly

Proceeds support the Minimally Invasive and
Robotic Surgery Program at Jefferson Methodist Hospital



Jefferson

HOME OF SIDNEY KIMMEL MEDICAL COLLEGE



**Methodist
Hospital
Foundation**

THE BOARD OF THE METHODIST HOSPITAL
FOUNDATION THANKS YOU FOR ATTENDING THE

14th Annual Fashion Fundraiser

MASTER OF CEREMONIES

J. Jeffrey Grant

Chairman, Methodist Hospital Foundation

GUEST SPEAKERS

Francesco Palazzo, MD, FACS

Chief of Surgery, Jefferson Methodist Hospital
Vice Chair of Surgery, Thomas Jefferson University Hospital

David Shipon, MD, FACC, FACP

Director, Preventive Cardiology, Cardiovascular Rehabilitation,
and Sports Cardiology, Jefferson Health
Clinical Assistant Professor of Medicine and Rehabilitation Medicine (SKMC)
Co-Director, Athlete Health Organization of Thomas Jefferson University

Jeremy Close, MD

Assistant Professor and Director, Sports Medicine Fellowship
Co-Director, Athlete Health Organization
Family and Community Medicine

DR. SCOTT STEWART FOUNDER'S AWARD

Joseph P. Anton

President and CEO, Methodist Hospital Foundation
Senior Vice President of Operations, Thomas Jefferson University Hospitals

Presented to

Diane Pirollo

Executive Director, Methodist Hospital Foundation
Community Health and Relations

Joseph Routon

Portrait Artist

Dixieanne P. James

President, Jefferson Central Region

FASHION SHOW



A MESSAGE FROM THE PRESIDENT

Today's Methodist Hospital Foundation Fashion Show marks our 14th annual event!

Special thanks to our Methodist Hospital Foundation Board members, Fashion Show Committee, and all of the volunteers who contributed their time to make this event a huge success. We are extremely grateful for the generosity of our sponsors

and their belief in the Methodist Hospital Foundation's commitment to the community.

The past few years have been difficult for our neighborhood, but the Methodist Hospital Foundation is as committed as ever to helping the people of South Philadelphia. The Foundation's ability to continue to support community programs is more important than ever. We are beyond grateful for each and every person who has supported the event in some way.

Please visit MethHospFdn.org to learn more about the Foundation and how we can work together for the betterment of the South Philadelphia community.

A handwritten signature in black ink, reading "Joseph P. Anton".

Joseph P. Anton

President and CEO
Methodist Hospital Foundation



THANK YOU TO OUR DESIGNERS AND MODELS!

This fashion showcase features designs from the Philadelphia Fashion Incubator and local emerging design houses, modeled by Jefferson employees!

DESIGNERS

A Man's Image
Jenson Brooks
Dark Jasmin
Elmira Designs*
Jeanette Limas*
Pandora Fende
Paper Shaper by Julie*
Prajjé Oscar*
Saint Studios

Fashion Show Curation and Production: 7textures

DJ: Evan EZ Kushin
Emcee: Yannick Trapman O'Brien
Make Up: Jennifer Tronieri
Hair: Love and Hair Peace
Photographer: Adam Suh

**Philadelphia Fashion Incubator*

MODELS

Kimberly Alston
Human Resources

Laura Bosley
Grateful Patient

Mary Chandler, RN
Supervisor, Operating Room

Richard Denicola, MD
Gastroenterology and
Hepatology

Nicole Dewees, RN
Operating Room

Patrick Haviland
Emergency Room Nurse

Michael Howanski, RN
Operating Room

Michael Irwin
Administrative Fellow

Samantha Jurek, RN
Operating Room

Komal Kumar
Pharmacy Intern

Lisa Liaciardello, RN
Nurse Manager, SDU/SPU

Kirsten Lung, MD
Surgical Resident

Angel McCullough
Director, Nursing Operations
and Patient Services

Gabriella O'Leary, MPH
Strategic Planning

Oludamilola Olugbile
Pharmacy Manager

Celeste Robinson, RN
Registered Nurse

Kori Teets-Hunter
Operations Manager,
Environmental Services

THANK YOU TO OUR SPONSORS!

FASHION

Drs. Charles and Theresa Yeo

COMMUNITY

Aramark

Ida Chen

Jefferson Department of Medical Oncology

INFLUENCER

Dr. Curtis A. Alloy

Barbara Capozzi

Caring People Alliance

George Deming

J. Jeffrey Grant

Jefferson Department of Gastroenterology and Hepatology

Jefferson Department of OB/GYN

Jefferson Department of Pathology, Anatomy, and Cell Biology

Jefferson Department of Radiology

Jefferson Department of Urology

Jefferson Methodist Hospital Department of Anesthesia

Jefferson Methodist Hospital Nursing

Francesco Palazzo, MD, FACS

Rothman Orthopaedics

VITAS Healthcare

Women's Association of Methodist Hospital

**As of September 25, 2023*

METHODIST HOSPITAL FOUNDATION BOARD MEMBERS

J. Jeffrey Grant, Chairman

Joseph P. Anton, President

Janice R. Bellace, Esq.

Honorable Matthew Carrafiello

Rev. Charles C. Cole

George E. Deming, III

Catriona Harrop, MD

Rev. Dr. Christopher Kurien

Daniel Peou

James E. Robinson

Frank H. Wisniewski, Esq.

FASHION SHOW COMMITTEE

Joseph P. Anton

Dawn Berckman

Alyson Caplan

Rosemarie Caporale

Donna M. Dougherty

Cathy Ettinger

Dorothy Grimes

Audrey Mazelin

Diane Panza-Deluca

Diane Pirollo

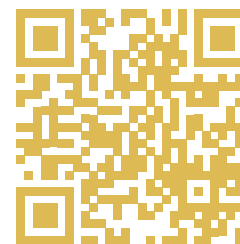
Kristen Resh

Rita Santamaria

If you are interested in joining the Methodist Hospital Foundation Fashion Show Committee, please reach out to Diane Pirollo, diane.pirollo@jefferson.edu for more information!

SILENT AUCTION AND RAFFLE

Silent Auction is now open for bidding!



Please visit
one.bidpal.net/FashionFundraiser
or scan the code, to view and bid on all Silent Auction items.

You will receive a text notifying you if you have won.
Please check in at the Silent Auction area before leaving to
pick up your items!

RAFFLE BASKETS

**Raffle tickets are \$20 per sheet and can be purchased from
any committee member.**

Winners of the raffle baskets will be announced at the
end of the Fashion Show!

Please check the board to see if you have won, and pick up your
basket before leaving.

***For any questions, or if you are having trouble bidding,
please find a Jefferson Events staff member for support.***

THANK YOU TO OUR SILENT AUCTION AND RAFFLE BASKET DONORS!

12th Street Catering
Affinity Hair
Antonio's
Body Restoration Spa
Campo's Deli
Cardenas Oil & Vinegar Taproom
City Winery
Courtyard by Marriott
Philadelphia South at
The Navy Yard
D&D Jewelry
Dave and Buster's
Dunkin' Donuts
Eastern State Penitentiary
Evil Genius Beer
Extras Boutique
Friends of Methodist at
Magee Rehabilitation
Dr. James George
Hand and Stone Voorhees
Harry's Hospitality Group
Hot Hands Spa and Massage
Humpty's Dumplings
Johnny's Restaurant
Methodist Administration
Michael Stern Sports Vendor
Molly, Methodist Hospital
Human Resources

National Constitution Center
Old City Coffee, Inc.
Pastificio
Pat's King of Steaks
People's Light Theatre Company
Pesto
Philadelphia Eagles
Philadelphia Museum of Art
Philadelphia Phillies
Philadelphia Theatre Company
Rachel Pintarelli, PACU Nurse
Pretty Pickins
Shop Rite
South Philadelphia Tap Room
SouthHouse
Starbucks
Stutz Candies
Ten Pennies Florist
Tony & Nick's Steaks
Tria
Wawa
Women's Association,
Methodist Hospital

**as of September 10, 2023*



**P. AGNES PROUDLY SUPPORTS THE
METHODIST HOSPITAL FOUNDATION**

**CONGRATULATIONS TO
DIANE PIROLLO**

**RECIPIENT OF THE DR. SCOTT STEWART
FOUNDER'S AWARD**

Drs. Charles and Theresa Yeo
and the
Jefferson Department of Surgery

are proud to support the 14th Annual
Methodist Hospital Foundation
Fashion Fundraiser



Property Damage Experts

Proudly supports

Methodist Hospital Foundation



www.TeamAllRisk.com

Your Full Service Restoration Contractor

Fire | Water | Mold

Store in your phone for 24 Hour Service:

877.247.5252



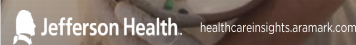
Remembering *Pam,*
our fashion angel!

- Rich Slinkard

**JUST
WHAT THE
DOCTOR
ORDERED**



We work tirelessly to support the Jefferson Health team. From patient dining experiences with on-trend menus to healthy café and micromarkets offerings that keep caregivers energized—
together, we improve lives.



**CONGRATULATIONS
DIANE!**

Andy, Elissa,
and the little Millers

**Congratulations to
Diane Pirollo**

and

**Methodist Hospital
Foundation**

Ida Chen

Saluting

Diane Pirollo for her extraordinary commitment to Methodist Hospital and the South Philadelphia community over decades of service. From the time she entered the hospital as a nurse and through many administrative roles, she has always demonstrated excellence in clinical care and hospital management, and a deep commitment to meeting the healthcare needs of those in South Philadelphia. She exemplifies the true meaning of 'care' in healthcare.

Thanking

Diane for her quiet, sustained professionalism and dedication—for it has inspired board members, doctors, nurses, and staff at Jefferson Methodist Hospital to serve our community and strive to provide the highest quality care to our patients.

Janice Bellace and Geoffrey Latta

Congratulations, Diane Pirollo.
You are the heart and soul of the Methodist
Hospital Foundation

Judge Matthew D. Carrafiello



Frank Wisniewski, Esq.
Methodist Hospital Foundation Trustee
is pleased to support the 14th Annual Methodist
Hospital Foundation Fashion Fundraiser.

NEW JERSEY
PENNSYLVANIA
DELAWARE
NEW YORK
FLORIDA
856.661.2289
www.flastergreenberg.com



Renaissance Estates

AT PACKER PARK
3320 South 20th Street

FULL Ten Year
Tax Abatement

3,200+ sf
of Luxury Living,
PLUS Roof Deck!



These exclusive custom townhomes are located at 3320 South 20th Street in upscale Packer Park, Philadelphia. They are nestled within the Reserve, Villas and Regency communities and are adjacent to historic FDR Park, designed by the Olmsted Brothers. They are also just minutes from Citizens Bank Park!

Luxury Features Included in Price

- 3 bedrooms, 3.5 bathrooms
- Finished lower level (can be a 4th bdr)
- 2-car garage with entrance into home
- 5-stop elevator (lower level to 4th floor with four-person capacity)
- Sub Zero and Wolf kitchen appliances
- Kohler faucets and fixtures
- Porcelanosa European kitchen cabinets, hardwood flooring and tile throughout
- Includes mirrored and lighted bathroom cabinets
- Booster water pump for added water pressure
- Dual-zone HVAC (two separate units)
- Ample sound and weather insulation
- Solid core interior doors
- Large Andersen 400 Series windows
- Interior sprinkler system (hideaway heads)
- Smart Living technology for lights, security cameras; Wi-Fi and cable ready

(215) 551-5100

Call today to reserve
a private tour and on-site
showroom visit.



Barbara A. Capozzi, Esq.
eXp Realty
Selling in Philly Team
(215) 551-5100 Office
(267) 973-0848 Mobile
BCPackerPark@gmail.com

Office: 3310 South 20th Street
Philadelphia, PA 19145

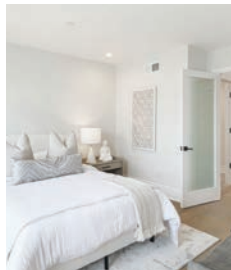
PackerParkNewHomes.com



Includes 68+ recessed
lights throughout



Large 20' x 40' fiberglass roof deck, deck
off kitchen (2nd floor),
and deck off primary
bedroom (4th floor)



Janice Bellace

Saluting

Dr. Francesco Palazzo for his leadership in moving the surgery services offered at Jefferson Methodist Hospital to the next level to better serve the healthcare needs of those in South Philadelphia,

and to all those in the Minimally Invasive and Robotic Surgery Program for their excellence in clinical care, and commitment to quality and patient safety.

THE ART OF THE EXPERIENCE

7textures

HELLO@7TEXTURES.COM

CURATION ENTERTAINMENT DESIGN STYLING INSTALLATIONS COMMUNITY ARTS EXPERIMENTS

1892

Methodist Hospital Women's Association



From those first days of making bedsheets in 1892, the Women's Association has always worked to make the days brighter for countless patients by giving them prayer shawls, lap robes and tray favors. It has, then and now, cooperated in all ways with the hospital administration to bring the most efficient patient care with the highest possible Christian standard to all people.

Join us: **MethHospFdn.org/womens**



Thank you to our audiovisual partner!

Audio/Visual Production // Lighting & Event Design
Office: (215) 633-1200
776 Haunted Lane // Bensalem PA 19020

DEPASQUALE LAW OFFICES

FRANK C. DEPASQUALE, JR., ESQ.
2332-34 SOUTH BROAD STREET
PHILADELPHIA, PA 19145
PHONE: (215) 755-4410
FAX: (215) 755-4110
E-MAIL: FRANK@DEPASQUALE-LAW.COM

MEMBER OF PA & NJ BARS

***Selected, Pennsylvania
Super Lawyers,
2009 - 2023***

The Associates In
Hospitalist Medicine (JMH)

are proud to support the

**Methodist Hospital
Foundation**

Jefferson Division of Vascular Surgery wishes
Dr. Palazzo and the Robotic Surgery Program
continued success.

Sincerely,
Babak, Dawn, Michael and Paul

Jefferson Department
of Medical Oncology

Supports the
**14th Annual
Methodist Hospital Foundation
Fashion Fundraiser**



21ST ANNUAL
JEFFERSON

gala

Wednesday, December 6, 2023 | 5:30 p.m.

Pennsylvania Convention Center
1101 Arch Street
Philadelphia, PA 19107

Proceeds from the event will fuel
Jefferson's mission to improve lives.



Jefferson.edu/Gala

Minimally Invasive and Robotic Surgery

About Our Program

Jefferson Health has been a leader in minimally invasive surgery since its introduction 40 years ago. These state-of-the-art techniques have since become the standard of care for a number of general surgery procedures, resulting in reduced scarring, shorter hospital stays, and faster recoveries with lower complication rates.

Physicians at Jefferson Methodist Hospital are among the most experienced surgeons in minimally invasive procedures across Philadelphia, South Jersey, and Delaware. Distinguished in their fields, they utilize leading-edge video surgical technology and the latest robotic platform (Da Vinci Xi) to perform many advanced abdominal and gastrointestinal procedures, both common (cholecystectomy, appendectomy, and inguinal hernia repair) and complex (gastric bypass, gastric sleeve, and colon resections for cancer and benign diseases).

Our program has grown and received the recognition of thousands of patients, not only due to the engagement of our skilled physicians and the advanced technology available, but also the dedicated nursing staff who ensure that patients will receive a superior level of care during their stay at Jefferson Methodist Hospital.

How You Can Help

Proceeds from the 14th Annual Methodist Hospital Foundation Fashion Fundraiser will support the acquisition of laparoscopic and minimally invasive surgery simulators and trainers, and support surgical outcomes research via data coordinator/analyst.

If you would like to make an appointment or receive more information, please call 1-800-JEFF-NOW (1-800-533-3669).

We would like to thank and recognize the Methodist Hospital Foundation Board and Fashion Show Committee for their continued support!